

ASH AND SLAG HANDLING**3.7. Analytics****3.7.16. Impact of political decisions on production and quality of ccps in Europe***H.-J. Feuerborn, European Coal Combustion Products Association, Essen, Germany***ABSTRACT**

Coal is a major fuel for energy and steam production in European coal-fired power plants. Political decision regarding clean coal technology led to modifications in power plant technology and installations of de-NO_x and de-SO_x system, those regarding subsidization of national coal mining to increased use of imported coal, those to reduce CO₂ emissions to increased use of biomass and production by renewable systems (wind-, solar-, hydropower). The later one does not only effects power producers but also producers of energy intensive production processes, e.g. cement industry, glass industry. After the nuclear accident in Fukushima in April 2011 the future of nuclear power in national energy plans was again discussed and led to different political decisions in the member states, e.g. the stop of nuclear power in Germany.

The political decisions for clean coal technologies led to the production of coal combustion products (CCPs) such as ashes from the combustion of coal and desulphurisation products. In some member states they are completely used as a replacement for virgin raw materials in the construction industry. The necessary quality aspects are defined in product standards and are subject to regular quality control. The switch to imported coal has an impact on the amount and availability of CCPs, the increased use of renewables on the amount and the quality of CCPs. Due to the increased use of renewables more efforts are necessary to produce quality products in coal-fired power plants.

INTRODUCTION

CCPs are produced with the production of electricity in coal-fired power plants. "CCPs" is a synonym for the combustion residues such as boiler slag, bottom ash and especially fly ash from different types of boilers and the desulphurisation products like spray dry absorption product and FGD gypsum.

In 2008, about 56 million tonnes of CCPs were produced in Europe (EU15), about 5 million tonnes less than in 2006. The production in all the European member states is estimated to be about 100 million tonnes. Exact figures from most of the EU 12 member states are still not yet available. Over the last years, the production of these CCPs has been increased in the member states due to legal requirements for flue gas cleaning. Parallel to this development in some countries the subsidizing systems for coal mining, mostly hard coal, were shortened and is subject to be stopped. The necessary amount of coal is then imported from different sources around the world. In some countries also na-

tional mining was completely stopped to reach national CO₂ reduction goals. Due to economic and social problems in the mining industry strategies for the use of national coal were re-implemented. In other member states the CO₂ reduction is planned to be realised by construction of more effective coal-fired power plants, the increased use of biomass for co-combustion in coal-fired power plants, increased use of biomass in FBC- and dry-bottom boilers, increased production by wind-, solar-, hydropower and others. In some countries also the use of nuclear power was seen to become the solution to reach the reduction goals. After the Fukushima accident however, some countries, e.g. Germany, decided to withdraw nuclear power production, in other countries the plans for new nuclear power plants are on hold and some countries continue with production by nuclear power and construction of new nuclear power plants.

Also for producers of energy intensive construction materials, such as cement, lime, glass, steel, the CO₂ reduction goals have to be considered. For the cement industry the technology for clinker production was modified and over the last years the production of blended cement has increased as most of the CO₂ is emitted with the clinker production. For the production of blended cement also fly ash is used and a steadily increasing demand is observed.

As the utilisation of CCPs is well established in some European countries, based on long term experience and technical as well as environmental benefits, they are part of regular production and, therefore, requested on a regular base. Availability is becoming a major problem in some member states as the production with imported coal, the use of biomass for co-combustion and the production by renewables result in lower amount of CCPs. In addition, the increased use of wind power results in unstable operation conditions for some coal-fired power plants which in addition to amount and availability also has an impact on the quality of CCPs and the related efforts in the power plant.

This paper gives an overview on the recent development of CCP production and utilisation based on political decisions regarding clean coal technologies, aims of EU energy plans and national solutions as well as resulting aspects regarding availability and quality of CCPs.

1. ECOBA – MISSION AND WORK

ECOBA was founded in 1990 by European energy producers to ensure full beneficial and high grade utilisation of all CPPs. Therefore, ECOBA is active in the development of European standards and is represented

on a number of CEN committees. The objectives of the Association are

- a) to encourage the development of the technology for the use of all by-products from coal-fired power stations, both on the industrial and the environmental level, with regard to relevant industrial and environmental demands;
- b) to promote the mutual interests of its members, internationally and particularly within the framework of the European organisations, which are of scientific, technical, ecological and legal nature;
- c) to establish and/or develop necessary legal and regulatory measures for recognition, acceptance and promotion of the use of all by-products of coal-fired power stations as valuable recoverable resources;
- d) to participate in international activities, including co-operation within the framework of the European organisations, and
- e) to ensure the exchange of information and documentation among the various national and international bodies.

Today, the Association has 24 full members from 15 European countries, all generators of power, and is co-operating closely with comparable associations on other continents - The American Coal Ash Association (ACAA), the Canadian Industries Recycling Coal Ash (CIRCA), the Japan Coal Energy Center (JCOAL), the National Coal Ash Board of Israel (NCAB), the United Kingdom Quality Ash Association (UKQAA) and, since 2006, the Moscow Power Engineering Institute (MPEI). These Associations are also members of the World-Wide CCP Network, a forum for the international exchange of information on CCPs. ECOBA is a foundation member of this network.

ECOBA members consider coal ashes and desulphurization products generated in coal-fired power plants to be valuable raw and construction materials which can be utilized in various environmentally compatible ways. It is the task of ECOBA to propagate this message especially amongst legislative and standardising institutions and to communicate the economic and ecological benefits of CCP utilisation.

ECOBA is active in the development of European standards, especially in the European Standard EN 450 "Fly Ash for Concrete" and prEN 14227 "Hydraulically bound mixtures - Specification- Part 3: Fly ash bound mixtures" and "Part 4: Fly ash for hydraulically bound mixtures". ECOBA also represents the producers of CCPs on a number of CEN committees (Examples include Cement - CEN TC 51, Concrete - CEN TC 104, Aggregates - TC 154, Road Materials - CEN TC 227 and Gypsum and Gypsum based Products - CEN TC 241).

2. COAL IN EUROPE

Coal plays an important role in energy mix in the European countries as most reliable, affordable and safe energy source, especially in central and Eastern Europe. In single countries the production by coal totals up to 88 %, for the EU 27 member states the share is about 26

%. The role of coal in the national energy mix of EU 27 member states in 2009 is given in Fig. 1 [1].

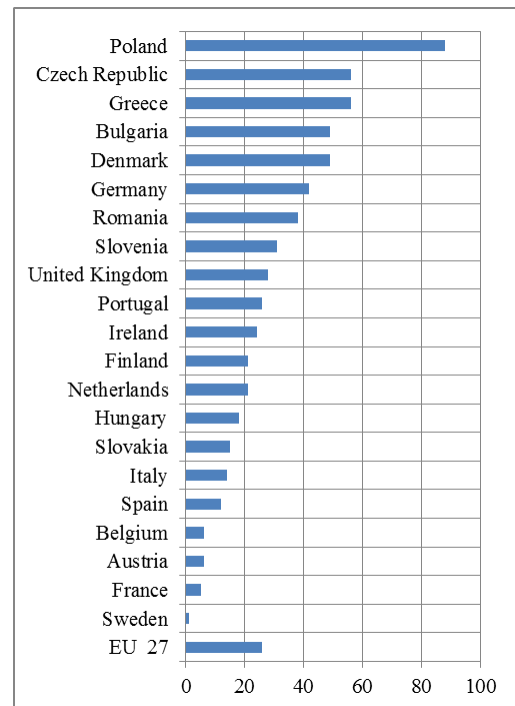


Fig.1. Role of coal in energy mix in European member states in 2009 [1]

About 192 million tonnes of hard and 521 million tonnes of lignite (including a small amount of sub-bituminous coal) were mined and used for power production in Europe in 2010 [2]. In addition, about 237 million tonnes of hard coal were imported. During combustion an estimated amount of more than 100 million tonnes of ashes is produced. Coal ash is a synonym for the combustion residues boiler slag, bottom ash and especially fly ash from different types of boilers. These ashes form the major part of all coal combustion products (CCPs) which consist also of desulphurisation products like spray dry absorption product and FGD gypsum. In 2008, about 56 million tonnes of CCPs were produced in Europe (EU15) which is about 5 million tonnes less than in 2006 [3]. The production in all the European member states is estimated to be about 100 million tonnes.

3. POLITICAL DECISIONS / LEGISLATIVE ASPECTS

Political decisions are either introduced by law, i.e. national law or European regulations which have to be considered after publications in the official Journal of the EC, or by Directives which have to be introduced into national law with a respective co-existence period.

The decisions regarding energy and heat production by coal-fired power stations either have an impact on the power plant technology or on the combustion process. The decisions on the power plant technology can be covered with the heading clean coal technology. The most important decisions and their impacts on coal-fired power stations and on CCPs are described in the following.

3.1. Clean Coal Technology- impact of Directives

Industrial activities, including the use of coal in coal-fired power plants, have a significant impact on the environment which must be kept as low as possible. Emissions from industrial installations have therefore been subject to EU-wide legislation. Individual member states may set their own national legislation but all member states must comply with EC Directives, although derogations may be permitted. The most important Directives are:

IPPC –Integrated Pollution Prevention and Control,
LCPD –Large Combustion Plant Directive,
IED –Industrial Emissions Directive.

The IPPC Directive [4] sets out the main principles for the permitting and control of installations based on an integrated approach and the application of best available techniques (BAT) [5]. It covers all emissions and overall plant performance.

The LCP Directive [6] aims to reduce acidification, ground level ozone and particulates by controlling the emissions of sulphur dioxide, oxides of nitrogen and dust from large combustion plants (i.e. plants with a rated thermal input of equal to or greater than 50 MW_{th}). All combustion plants built after 1987 must comply with the emission limits in LCPD. Those power stations in operation before 1987 are defined as 'existing plants'. Existing plants can either comply with the LCPD through installing emission abatement (Flue Gas Desulphurisation) equipment or 'opt-out' of the Directive. An existing plant that chooses to 'opt-out' is restricted in its operation after 2007 and must close by the end of 2015. Due to this, several old boilers in the member states are subject to close or are retrofitted. In the UK, existing operators were given the option to meet the requirements of the Directive by accepting concentration based Emissions Limit Values (ELVs) for the 3 pollutants by taking part in the UK National Emissions Reduction Plan (NERP).

The IED Directive [7] is the successor of the IPPC Directive and in essence, it is about minimising pollution from various industrial sources throughout the European Union. The IED is based on several principles, namely (1) an integrated approach, (2) best available techniques, (3) flexibility, (4) inspections and (5) public participation. The IED replaces the IPPC Directive and the sectoral Directives as of 7 January 2014, with the exemption of the LCP Directive, which will be repealed with effect from 1 January 2016.

As a result of these regulations the emissions from power plants are reported in the European Pollutant Release and Transfer Register (E-PRTR [8]), which replaces and improves the previous European Pollutant Emission Register (EPER).

After several years of evaluation the reduction of emissions can best be shown on the example of SO_x (fig. 2) as it demonstrates the largest percentage reduction of emissions since 1990 of the main pollutants across the European Union. Emissions in 2008 were 78 % less than in 1990, mostly by reduction in EU 15 countries. It is noteworthy that SO_x emissions decreased rather sharply, falling 20 % in 2008 compared to 2007,

mainly due to reductions reported in Bulgaria, Poland and Spain. In each of these Member States, the lower emissions were mainly due to reductions reported from public power plants. For example in Spain the emission reduction was largely due to using lower amounts of more-polluting coal for electricity generation and use of more natural gas and renewables such as wind, photovoltaic and biomass [9].

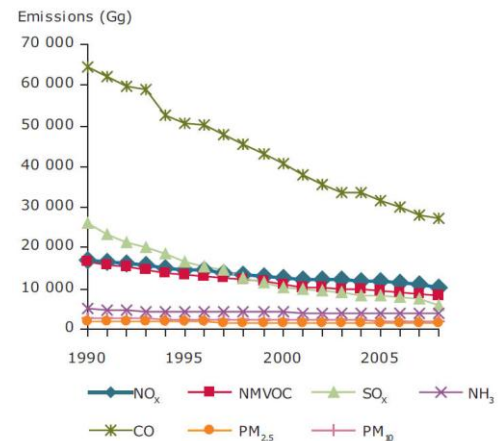


Fig. 2. EU-27 emission trends for main air pollutants [9]

Together with the reduction of emissions the amount of residues from flue gas cleaning, i.e. fly ashes and FGD-gypsum, is increased. The development of the production of fly ash from hard coal and lignite combustion in dry-bottom boilers is shown in fig. 3. Although in 2008 a smaller production of fly ash for the EU 15 member states is observed it has to be noted that this figure follows the industry crisis and do not reflect the situation in the single EU member states. In some countries the production was at same level or even higher than the year before. In some countries coal mines were closed for different reasons which cause the use of imported coal with mostly lower ash contents.

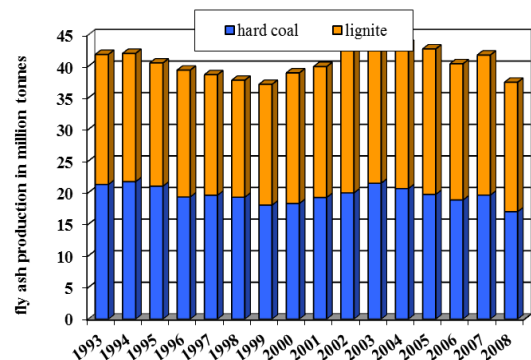


Fig.3. Development of the fly ash production from hard coal and lignite in Europe (EU 15) from 1993 to 2008 [3]

In Fig. 4 the development of the production of FGD gypsum from hard coal and lignite is given. Compared to fly ash an increase of FGD gypsum production can be observed in 2008. It has to be noted that the figures will not show the effects of the above mentioned reduction of SO_x emission as the data from East European countries are not covered by the EU 15 statistics of ECOBA [3]. Due to retrofitting of power plants in the

East European countries the amount of FGD gypsum is expected to increase. But this effect is reduced by the development in the West European countries regarding increased production by renewables.

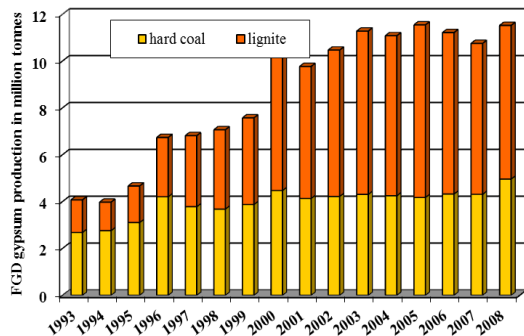
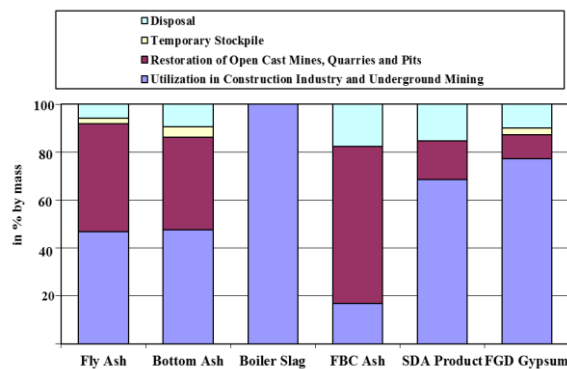


Fig.4. Development of FGD gypsum production from hard coal and lignite in EU 15 from 1993 to 2008 [3]

It is another important issue of Clean Coal Technology to avoid the disposal of the minerals produced in power plants and to use them as valuable sources. After more than 40 years of experience CCPs are meanwhile mainly utilised in the building material industry, in civil engineering, in road construction, for construction work in underground coal mining as well as for recultivation and restoration purposes in open cast mines.

In 2008, about 54% of the total CCPs are used in the construction industry, in civil engineering and as construction materials in underground mining and about 37% for restoration of open cast mines, quarries and pits. About 2.4 % were temporarily stockpiled for future utilisation and about 7 % were disposed off [3]. The rates of utilisation, temporary stockpile and dis-



posal for the single CCPs are given in Fig. 5.
Fig.5. Utilisation, temporary stockpile and disposal of coal ash in Europe (EU 15) in 2008 [3]

3.2. Clean Coal Technology - impact of Energy Plans

On 11 December 1997, the representatives of 37 industrial countries agreed to reduce greenhouse emissions (GHC) to an average of five percent against 1990 levels over the five-year period 2008-2012. This agreement is known as Kyoto Protocol [10] which entered force in 2005. The protocol is linked to the United Nations Framework Convention on Climate Change [11]. When the Convention encourage

industrialised countries to stabilize GHG emissions, the Protocol only commits them to do so.

One instrument given in the Kyoto to reach the reduction aim is the so called clean development mechanism (CDM). The CDM allows emission-reduction projects in developing countries to earn certified emission reduction (CER) credits, each equivalent to one tonne of CO₂. These CERs can be traded and sold, and used by industrialized countries to a meet a part of their emission reduction targets under the Kyoto Protocol. The mechanism stimulates sustainable development and emission reductions, while giving industrialized countries some flexibility in how they meet their emission reduction limitation targets.

In December 2008, the European Parliament and the Council agreed upon the so-called “Climate and Energy Package”, which entered force in 2009. The legislative package put in place what is collectively known as the EU-20-20-20 targets to be met by 2020:

- Reduction of greenhouse gas emissions of at least 20 % below 1990 level,
- Increasing the share of renewable energy to 20%;
- Improving the EU’s energy efficiency by 20%.

With this package additional legislation was installed for promotion of the use of renewable energy (RES), geological storage of carbon dioxide and a revised Trading Scheme for greenhouse gases (GHG). From 2013, the system for allocating emission allowances will change significantly compared to the two previous trading periods (2005 to 2012). At first, the emission allowances will be distributed according to fully harmonized and EU-wide rules. At second, auctioning will become rule for the power industry, i.e. the allowances will not be any longer allocated for free.

In addition, the EU is of the opinion that there is a potential to further reduce emissions. In Article 28 of the revised EU ETS for GHG an adaptation of the already ambitious mandatory target to reduce GHG by 20 % in 2020 to a 30 % reduction is foreseen if an international agreement is reached. The European Council has also given a long-term commitment to the decarbonisation path with a target for the EU and other industrialised countries of 80 to 95 % cuts in emissions by 2050 [12]. To reach this again ambitious aim the European Commission adopted the Communication "Energy Roadmap 2050" on 15 December 2011. In the Energy Roadmap 2050 the Commission explores the challenges posed by delivering the EU's decarbonisation objective while at the same time ensuring security of energy supply and competitiveness. The Energy Roadmap 2050 is the basis for developing a long-term European framework together with all stakeholders.

The instruments of the industry to reduce greenhouse gases (CHG) are on one hand the increase in energy efficiency. A most effective use of coal will on the other hand also lead to the reduction of CO₂-emission. In fig. 6 the CO₂ reduction potential of European power plants is given together with the energy efficiency, fuel consumption and – based on this – the CO₂ emission. The state-of-the-art efficiency in the EU is 45 % which is going to be increased to 50 % with the construction of the new power plants. Further reduction

with carbon capture storage will give higher CO₂ reduction rates but will counteract all efforts regarding efficiency by efficiency losses of 10 to 12 %.

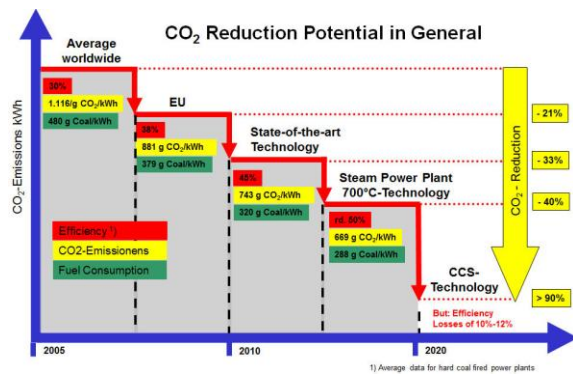


Fig.6. Power Plant efficiency and CO₂ reduction potential of the European power industry [13]

With the construction of new power plants the EU member states on one hand prepare to meet the increasing demand for energy and on the other hand meet the GHG emission reduction targets. Due to the country specific situation (own coal reserves, availability of rivers for hydropower, accessibility for sea trade,...) the energy plans of each country is different.

Due to the announcement of projects for the production plants by wind, hydropower, nuclear power, lignite and turf, hard coal, oil and gas the way to improve EU energy efficiency as well as to increase the share of renewable energy is shown. With the increased use of biomass in pure biomass combustion plants the load of coal-fired power plants is reduced. Together with production by other renewables like wind, solar and hydropower a change from base load to partly peak load production was observed in some countries. This has an impact on the maintenance of the power plants and therefore to production cost. Also the quality of CCPs is affected and more attention must be given to CCPs production.

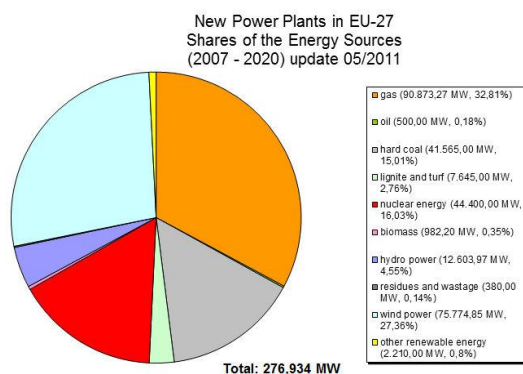


Fig.7. New power plants projects in European member states [14]

The projects for coal-fired plants - 42.565,00 MW in total- are partly already started and/or near to start energy production. The power plants will partly replace old power stations. The construction of coal-fired power plants in Germany and the Netherlands are far advanced and the first production is expected soon. The

power plants in the Netherlands and Germany for hard coal are all developed are designed to burn import coal as well as for co-combustion of higher shares of co-combustion materials. The boilers and the process control advices are designed to produce fly ash for the use according EN 450 fly ash for concrete. Based on the long term experience with co-combustion of higher shares of co-combustion materials the revised EN 450-1 will cover fly ash with up to 40 % of co-combustion material (50 % in case of green wood). The revised table 1 of EN 450-1 with types of co-combustion is given in table 1.

Table 1 (Table 1 of the revised EN 450-1) - Types of co-combustion materials

1	Solid Bio Fuels conforming to EN 14588:2010 including animal husbandry residues as defined in 4.3 and excluding waste wood as defined in 4.40, 4.107 and 4.136
2	Animal meal (meat and bone meal)
3	Municipal sewage sludge
4	Paper sludge
5	Petroleum coke
6	Virtually ash free liquid and gaseous fuels

NOTE Other types of co-combustion materials not included in Table 3 (Table 1 of revised EN 450-1) may be subject to an ETA.

The boilers for lignite combustion are designed to burn the specific coal types mined nearby the plant. Also these boilers are designed for co-combustion.

The new coal-fired power plants are designed to meet the requirements for carbon capture storage, a process for CO₂ separation from industrial processes and its safe and long-term disposal. Most of the plants today are designed as CCS-ready, means that they are designed to apply the technology when the research regarding capture is advanced and the storage technology and respective site is defined. CCS requires a 3-step approach: separation in the power plants, transport and storage.

There are three main types of technologies existing to separate the CO₂ from the fuel or the flue gas:

- Post-combustion,
- Pre-combustion
- Oxy-combustion

The basic technology exists for each of the solutions and was partly proven, at least in pilot plants or lower scale industrial applications. However, the cost for up-scaling of existing plants and the cost for CO₂-certificates have to be considered. Doubts come with respect to the up-scaling and their costs. After separation the geologic storage is proven with high success in several different places, although yet with capacities 1Mton/y. The assessment of local storage areas is of importance. In East Germany, the Test to store CO₂ in deep mining have now been stopped. The transport technology is proven at an existing long network of CO₂ pipelines specially within North America. Adequate care is required with composition of CO₂ impuri-

ties. The discussion e.g. in Germany showed great problems regarding public acceptance.

Post-combustion

Post-combustion CO₂ capture is a process where the CO₂ is removed from a gas mixture after the combustion of a fossil fuel. When a fossil fuel like coal, oil or natural gas is combusted in a traditional power plant the flue gas will contain some CO₂, typically in the range from a few percent to ten percent. The rest will be mainly nitrogen and water vapour.

There are several options for separating out the CO₂ from this gas mixture by post-combustion CO₂ capture. The most common process is absorption based on a chemical reaction between CO₂ and a suitable absorbent in a scrubber system, where the flue gas from the power plant is mixed with an absorbent dissolved in water. Typical absorbents that are used today are amines and carbonates.

After the absorption process, the absorbent and the CO₂ are separated in a regeneration column. The result is then a stream of pure CO₂ and a second stream of absorbent that can be recycled to the scrubber column. The CO₂ is then compressed and sent to use or disposal. The post combustion process is the most recommended for retrofitting of existing power plants with CCS technology.

Pre-combustion

CO₂ can be separated from fossil fuel before combustion, which is the so-called pre-combustion CO₂ capture *method*. The *principle* of this process is to first convert the fossil fuel into CO₂ and Hydrogen gas (H₂). The H₂ and the CO₂ is then separated in the same way as in the post-combustion process, although a smaller installation can be used. This results in a hydrogen-rich gas which can be used in power plants or as fuel in vehicles. The combustion of hydrogen does not lead to any production of CO₂. With pre-combustion CO₂ capture about 90 percent of the CO₂ from a power plant can be removed. As the technology requires significant modifications of the power plant, it is only viable for new power plants, not for existing plants. It is *not* an option at the pulverized coal (PC) power plants that comprise most of the existing capacity. However, it is an option for integrated coal gasification combined cycle (IGCC) plants.

Oxy-combustion

Oxyfuel combustion with CO₂ capture is very similar to post-combustion CO₂ capture. The main difference is that the combustion is carried out with pure oxygen instead of air which may lead to higher burning temperatures. As a result the flue gas contains mainly CO₂ and water vapour, which can be easily separated. Up to 100 percent CO₂ can be captured through this process.

However, it is expensive to produce pure oxygen. The currently available technologies for pure oxygen-production are based primarily on cryogenic separation of air. Here the air is cooled down below the boiling

point before the liquefied oxygen, nitrogen and argon are separated. However, the high amount of energy involved in this process make it a very expensive process and much research is subsequently carried out in order to develop membranes that separate oxygen from air more efficiently

To inform about the progress of the process development and to increase the knowledge about the successful use of CCS technique i.a. the zero emission platform was created [15].

The pre- and post-combustion processes will not have any impact on the resulting CCPs as there is no change in the coal combustion and the desulphurization process. Due to higher burning temperature in the oxy-fuel process however an impact on CCP quality expected.

A major technology to save or avoid CO₂ emission is the production by nuclear power. Several countries are producing their energy mostly by nuclear power (e.g. France, Finland,..). In other countries nuclear power is part of the energy mix and a tool to work towards CO₂ reduction. The discussion for new power plants were mainly based on the disposal of the nuclear waste.

After the Fukushima accident on March 11, 2011 different reactions were observed in the member states. In Germany, the politicians decided to stop nuclear power although they have decided to extend the lifetime of existing plants some months before. In other countries the plans for new power plants are on hold or the future plans are still valid.

3.3. Other impacts

3.3.1. Coal mining

Other impacts on generation by power-fired power plants are based on the changes to imported coal due to a stop of national coal mining.

In Belgium, the national coal production reached a peak production of 30 million tonnes between 1952 and 1953. In the late 1950-ties the Walloon mines were closed and the Limburg mines were closed 20 years later. The last mine in Belgium was closed in 1992.

In the Netherlands, hard coal was mined from 1900 to mid 1970ies in the South Limburg area. At the north-west fringe of the German lignite basin near Cologne also lignite was mined opencast from 1925 to 1968. Today, the port of Rotterdam is now the biggest port for coal imports into Europe.

In Germany, from more than 150 mines in the 1950-ties only 8 are left which are subject to closure by 2018. Only the lignite mines in the three main mining areas in the western part near Cologne, in the middle German part near Leipzig and in the Lausitz area near the Polish border will remain.

The hard coal-fired power stations have to use imported coal to a higher extent than by now. This causes more efforts to guarantee an appropriate ash quality for the use in the different fields of application and also to different ash amounts due to the different ash content of the imported coal.

3.3.2. Product standards

In November 2005, CEN established a new Technical Committee (CEN/TC 351) for "Construction products: Assessment of release of dangerous substances". The TC has developed horizontal standardised assessment methods for harmonised approaches relating to the release of regulated dangerous substances under the Construction Products Directive (CPD) taking into account the intended conditions of the use of the product. It addresses emission to indoor air, and release to soil, surface water and ground water.

The standards for indoor air and for release into soil and ground are near to start the official procedure in CEN committees. A robustness test for both procedures is still under work. In the CE marking of all product standards information on the regulated dangerous substances have to be added. The standards for aggregates are the first of standards which have to define the substances and to propose evaluation criteria. The industry is working on dossiers with all relevant data to allow a decision whether the aggregates need a regular testing for the dangerous substances (WT- Without testing-; WFT – Without further testing-; and FT- further testing-procedures).

CONCLUSIONS

Coal is a major fuel for energy and steam production in European coal-fired power plants. The annual production of CCPs in EU 27 is still estimated to amount to about 100 million tonnes (56 million tonnes in EU 15 in 2008). Political decision regarding clean coal technology led to modifications in power plant technology and installations of de-NO_x and de-SO_x system, which resulted in CCP production in countries without a developed market.

Decision regarding a reduction or stop of subsidization of national coal mining led to increased use of imported coal and partly to different ash amounts in the power plants. This leads to more efforts for the marketing of ashes as construction materials.

The decision to reduce CO₂ emissions led to increased use of biomass and production by renewable systems (wind-, solar-, hydropower) and force coal-fired power plants to be operated also for peak load and reserve. New coal-fired power plants have to consider carbon capture storage (CCS) technologies which are

still under development.

Based on all the political decisions and plans which effect the power production in the European member states – and therefore also the production of CCPs - the power industry will take all efforts to provide always good quality products to the construction market.

REFERENCES

1. **EUROSTAT** 2010
 2. **EURACOAL**; Calculation based on data of EURACOAL-Coal in Europe
 3. **ECOBA**: Statistics on Production and Utilisation of CCPs in Europe (EU 15) in 2008
 4. **IPPC**: Council Directive 96/61/EC of 24 September 1996 concerning integrated pollution prevention control
 5. **BAT**: Best Available Techniques, Integrated Pollution Prevention and Control Reference Document, July 2006; <http://eippcb.jrc.ec.europa.eu/reference/lcp.html>
 6. **LCPD**: DIRECTIVE 2001/80/EC OF THE EUROPEAN PARLIAMENT AND OF THE COUNCIL of 23 October 2001 on the limitation of emissions of certain pollutants into the air from large combustion plants
 7. **IED**: Directive 2010/75/EU of the European Parliament and of the Council of 24 November 2010 on industrial emissions (integrated pollution prevention and control) (recast)
 8. **E-PRTR**: European Pollutant Release and Transfer Register (E-PRTR); <http://prtr.ec.europa.eu/>
 9. **LRTAP**: European Union emission inventory report 1990–2008 under the UNECE Convention on Long-range Transboundary Air Pollution (LRTAP), EEA Technical Report 7/2010, ISSN 1725-2237
 10. **Kyoto protocol** on the United Nations Framework Convention Climate Change, 2008
 11. **UNFCCC**: United Nations Framework Convention on Climate Change
 12. **COM (2011) 370 final**: proposal for a Directive of European Parliament and of the Council on energy efficiency and repealing Directives 2004/8/EC and 2006/32/EC, Brussels, June 22, 2011
 13. **VGB Facts and Figures** 2011/2012; www.vgb.org
 14. **VGB Facts and Figures** 2011/2012, updated version of the graph on new projects and announcements of projects
 15. **ZEP**: ZEP European Zero Emission Platform <http://www.zero-emissionplatform.eu>
- H.-J. Feuerborn**. Impact of political decisions on production and quality of ccps in Europe // Proceedings of the IV scientific and practical workshop "Ashes from TPPs: removal, transport, processing, landfilling", Moscow, April 19–20, 2012 — M.: MPEI-Publishers, 2012. P. 125 – 131.